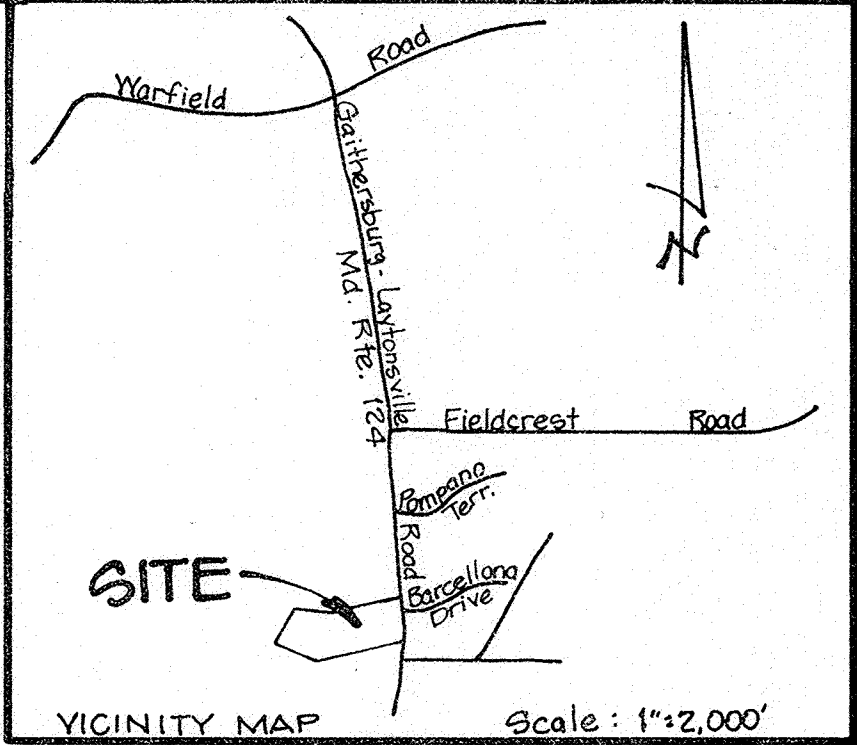


No	Radius	Delta	Arc	Tan.	Chd. Brg.	Chord
1	214.00'	38°01'07"	142.00'	73.73'	N69°59'26"W	139.41'
2	186.00'	39°44'15"	129.00'	67.22'	S69°07'53"E	126.43'
3	25.00'	90°00'00"	39.27'	25.00'	S46°00'00"W	35.35'
4	30.00'	53°30'59"	28.02'	15.13'	S25°45'29"E	27.01'
5	44.00'	28°01'57"	22.043'	32.54'	S00°00'00"E	52.34'
6	30.00'	53°30'59"	28.02'	15.13'	N27°45'29"E	27.01'
7	25.00'	90°00'00"	39.27'	25.00'	N44°00'00"W	35.35'
8	161.00'	25°24'22"	71.40'	36.30'	N78°17'45"E	70.81'
9	169.00'	12°36'01"	41.57'	20.67'	N84°41'57"E	41.49'
10	865.00'	19°36'04"	295.92'	149.42'	N74°46'55"W	294.48'
11	235.00'	18°30'21"	301.99'	152.32'	S74°17'52"E	300.68'

Note: Under Provision of the Montgomery County Code, development of this property has been approved in accordance with Chapter 59-C-1.6, Development Including Moderately Priced Dwelling Units, and moderately priced units are being provided in conformance with the requirements of Chapter 25-A.



SURVEYOR'S CERTIFICATE

I HEREBY CERTIFY THAT THE PLAN SHOWN HEREON IS CORRECT; THAT IT IS A SUBDIVISION OF PART OF THE LAND CONVEYED BY THE CHESAPEAKE CONFERENCE ASSOCIATION OF SEVENTH DAY ADVENTISTS TO SMART, LTD. A MARYLAND CORPORATION, BY DEED DATED MAY 31, 1983 AND RECORDED AMONG THE LAND RECORDS OF MONTGOMERY COUNTY, MARYLAND IN LIBER 6092 AT FOLIO 408.

DATE Oct. 27, 1983 Douglas H. Riggs, III
 DOUGLASS H. RIGGS, III
 PROFESSIONAL LAND SURVEYOR MD.#10712

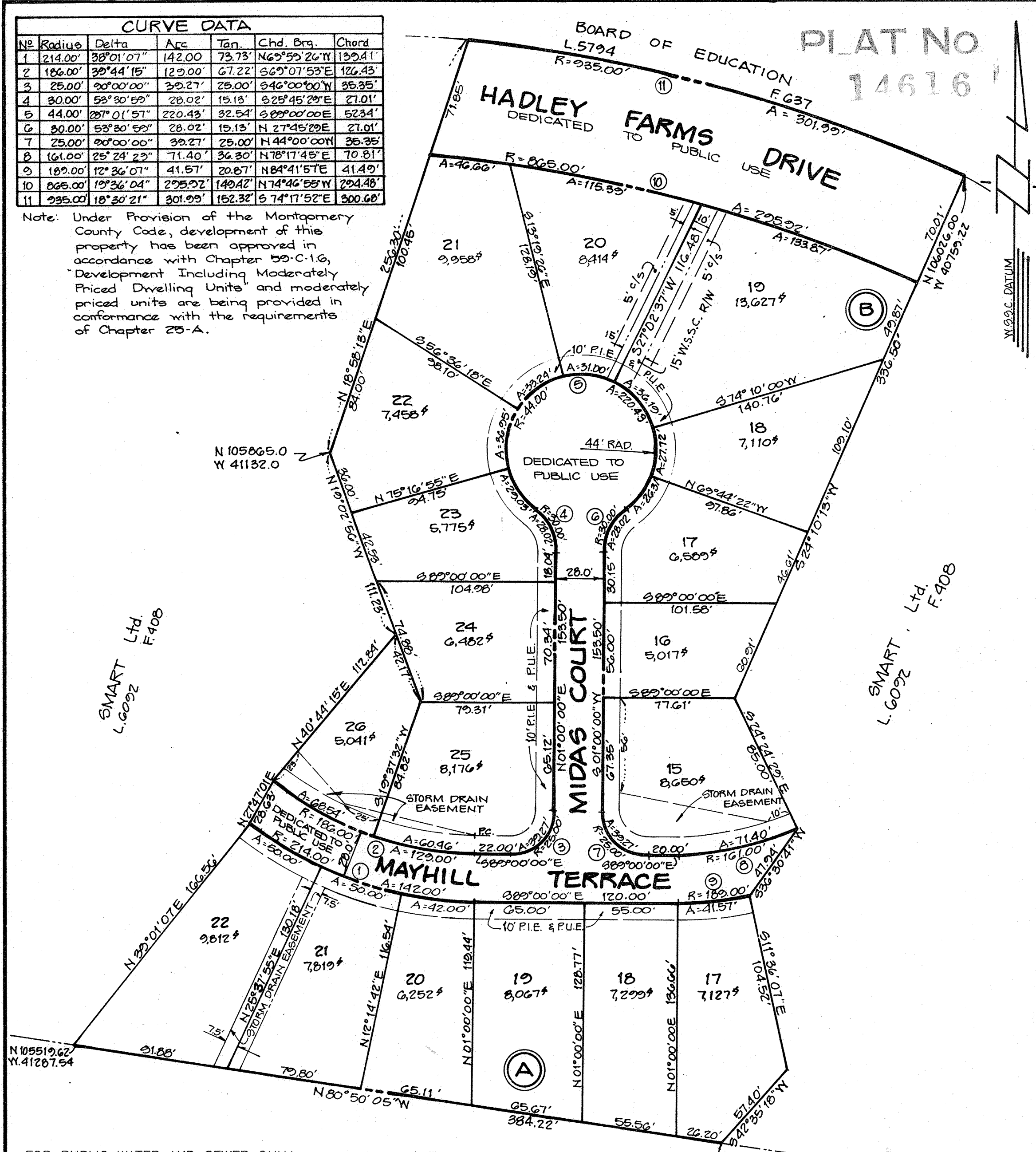
OWNER'S DEDICATION

WE, SMART, LTD. A MARYLAND CORPORATION, BY JOHN N. SMART PRESIDENT AND MARY P. CONNELLY, SECRETARY OWNERS OF THE PROPERTY SHOWN AND DESCRIBED HEREON; HEREBY ADOPT THIS PLAN OF SUBDIVISION; ESTABLISH THE MINIMUM BUILDING RESTRICTION LINES; DEDICATE THE STREETS TO PUBLIC USE; ESTABLISH AND GRANT TO MONTGOMERY COUNTY, MARYLAND TEMPORARY SLOPE EASEMENTS TWENTY-FIVE (25) FEET WIDE OVER THE LOTS AND OUTLOTS INCLUDED HEREON, ADJACENT, CONTIGUOUS AND PARALLEL TO THE STREET LINES, THE SLOPE EASEMENTS SHALL BE EXTINGUISHED AFTER ALL REQUIRED PUBLIC IMPROVEMENTS IN ADJACENT ROADWAYS HAVE BEEN LAWFULLY COMPLETED AND HAVE BEEN ACCEPTED FOR MAINTENANCE BY MONTGOMERY COUNTY OR OTHER APPROPRIATE PUBLIC AGENCY; ESTABLISH AND GRANT TO MONTGOMERY COUNTY, MARYLAND TEN (10) FOOT PUBLIC IMPROVEMENTS EASEMENTS (P.I.E.) AS SHOWN FOR PURPOSES OF INSTALLATION, MAINTENANCE, AND OPERATION OF STORM DRAIN SYSTEMS AND APPURTENANCES; HEREBY GRANT TEN (10) FOOT PUBLIC UTILITIES EASEMENTS, (P.U.E.) AS SHOWN TO THE PARTIES NAMED IN A DOCUMENT ENTITLED "DECLARATION OF TERMS AND PROVISIONS OF PUBLIC EASEMENT" RECORDED IN LIBER 3834 AT FOLIO 457 OF THE MONTGOMERY COUNTY, MARYLAND LAND RECORDS SUBJECT TO ALL CURRENT AND APPLICABLE REGULATIONS OF ALL FEDERAL, STATE, AND LOCAL GOVERNING AGENCIES; GRANT TO MONTGOMERY COUNTY, MARYLAND, STORM DRAIN EASEMENTS SHOWN HEREON; AND HEREBY GRANT TO THE WASHINGTON SUBURBAN SANITARY COMMISSION THE TEN (10) FOOT PUBLIC UTILITIES EASEMENT (P.U.E.) AND EASEMENTS SHOWN HEREON FOR THE PURPOSES OF CONSTRUCTION, RECONSTRUCTION, INSTALLATION, OPERATION, AND MAINTENANCE OF SANITARY SEWER AND WATER LINES, APPURTENANCES AND HOUSE CONNECTIONS, AND ALSO THE CONSTRUCTION STRIP AS SHOWN, DURING THE PERIOD OF ORIGINAL CONSTRUCTION. *

THERE ARE NO SUITS, ACTIONS AT LAW, LIENS, LEASES, MORTGAGES, TRUSTS OR EASEMENTS AFFECTING THE PROPERTY INCLUDED IN THIS PLAN OF SUBDIVISION, EXCEPT A CERTAIN DEED OF TRUST, AND THE PARTIES IN INTEREST THERETO HAVE AFFIXED THEIR SIGNATURES BELOW INDICATING THEIR ASSENT TO THIS PLAN OF SUBDIVISION.

DATE: 10/11/83 ATTEST: Mary P. Connelly BY: John N. Smart
 MARY P. CONNELLY (SECRETARY) JOHN N. SMART (PRESIDENT)

WE HEREBY ASSENT TO THIS PLAN OF SUBDIVISION
William Callantine TRUSTEE
John F. Gatlin TRUSTEE
 CHESAPEAKE CONFERENCE ASSOCIATION SEVENTH DAY ADVENTISTS
 E. AUSTIN CARLIN (TRUSTEE)



FOR PUBLIC WATER AND SEWER ONLY
 MONTGOMERY COUNTY, MARYLAND
 DEPT. OF TRANSPORTATION
 APPROVED DECEMBER 23, 1983
 DATE
Robert Z. Meyerman
 P.I.A. # 83-198 FOR DIRECTOR

PLAT TABULATION	
NUMBER OF LOTS	= 10
AREA OF LOTS	= 3.18349 ACRES
AREA OF STREET DEDICATION	= 0.95332 ACRES
TOTAL AREA OF PLAT	= 4.13681 ACRES

RECORDED:
 PLAT BOOK:
 PLAT NO:

FILED
 JAN 13 1984

LOTS 17 THRU 22 BLOCK A
 LOTS 15 THRU 26 BLOCK B
HADLEY FARMS
 1ST ELECTION DISTRICT
 MONTGOMERY COUNTY, MARYLAND
 SEPTEMBER 1983 SCALE 1"=50'

MACRIS, HENDRICKS AND WITMER P.A.
 ENGINEERS SURVEYORS
 15209 FREDERICK ROAD
 ROCKVILLE, MARYLAND 20850
 (301) 340 - 8705

MARYLAND NATIONAL CAPITAL PARK AND PLANNING COMMISSION
 MONTGOMERY COUNTY PLANNING BOARD
 APPROVED November 17, 1983
 DATE
Ismael A. Cristobal CHAIRMAN
[Signature] SEC. - TREAS.

*Addendum: Further, we grant to Montgomery County, Maryland, its successors and assigns, forever an easement in, on, and over the land herein identified as "Ten Foot Wide Public Improvements Easement" (10' P.I.E.) with the terms and provisions of said grant being those set forth in that certain document entitled "Declaration of Easement" recorded among the land Records of Montgomery County, Maryland in Liber 6218 at Folio 341 which said terms are incorporated herein by this reference.