

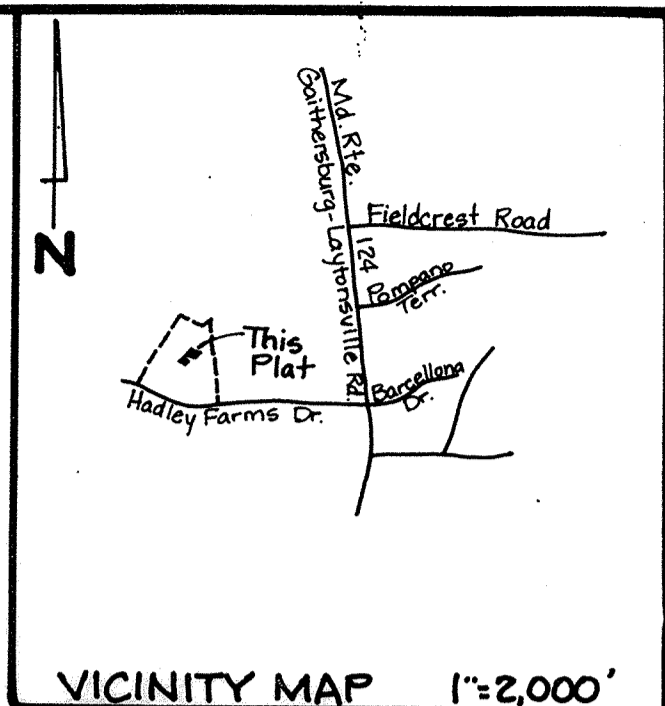
SURVEYOR'S CERTIFICATE

PLAT NO. 16030

I hereby certify that the plat shown hereon is correct; it is a subdivision of part of the land conveyed by Chesapeake Conference Association of Seventh Day Adventists to Smart, Ltd., by a deed dated April 26, 1985 in Liber G741 at Folio 332 and by Smart Ltd., to Fulte Home Corporation by a deed dated April 30, 1985 in Liber G742 at Folio 565 and being recorded among the Land Records of Montgomery County, Maryland. Permanent property line markers will be placed as required by Section 50-24 (e) of the Montgomery County Subdivision Regulations.

April 7, 1986
Date

Douglas H. Riggs III
Douglas H. Riggs, III
Professional Land Surveyor
Md. Reg. No. 10712



OWNERS DEDICATION

We, Fulte Home Corporation, a Michigan corporation, by James N. Anderson, Division President and Attorney-in-Fact and Thomas DeFlavis, Division Vice-President and Attorney-in-Fact, and Smart Ltd., a Maryland corporation, by John N. Smart, President, and Mary P. Connelly, Secretary, owners of the property shown hereon, hereby adopt this plat of subdivision, dedicate the streets to public use, establish and grant to Montgomery County, Maryland, temporary slope easements twenty-five (25) feet wide over the lots and parcels included hereon, adjacent, contiguous, and parallel to the street lines, the slope easements shall be extinguished after all required public improvements in adjacent roadways have been accepted for maintenance by Montgomery County, or other appropriate agency; establish the minimum building restriction lines and hereby grant to the Washington Suburban Sanitary Commission the easements shown hereon for the purposes of construction, reconstruction, installation, operation, and maintenance of sanitary sewer and water lines, appurtenances, and house connections, and also the construction strips (c/s) as shown, during the period of original construction.

There are no suits, actions at law, liens, leases, mortgages, or trusts affecting the property included in this plat of subdivision except a certain deed of trust and the parties in interest thereto have affixed their signatures below indicating their assent.

FULTE HOME CORPORATION (Seal)

April 4, 1986 Attest: *Thomas DeFlavis*
Date Thomas DeFlavis, Div. Vice Pres. & Attorney-in-Fact

By: *James N. Anderson*
James N. Anderson, Pres. & Attorney-in-Fact

SMART, LTD. (Seal)

April 4, 1986 Attest: *Mary P. Connelly*
Date Mary P. Connelly, Secretary

By: *John N. Smart*
John N. Smart, President

We hereby assent to this plan of subdivision (for Smart, Ltd.)

MELLON FINANCIAL SERVICES CORP. #8

4/4/86 *Kevin J. Barron*
Date Kevin Barron
Substitute Trustee

Dwight M. Callantine
Trustee

Parcel E, Block C
and Street Dedication
HADLEY FARMS
1st Election District

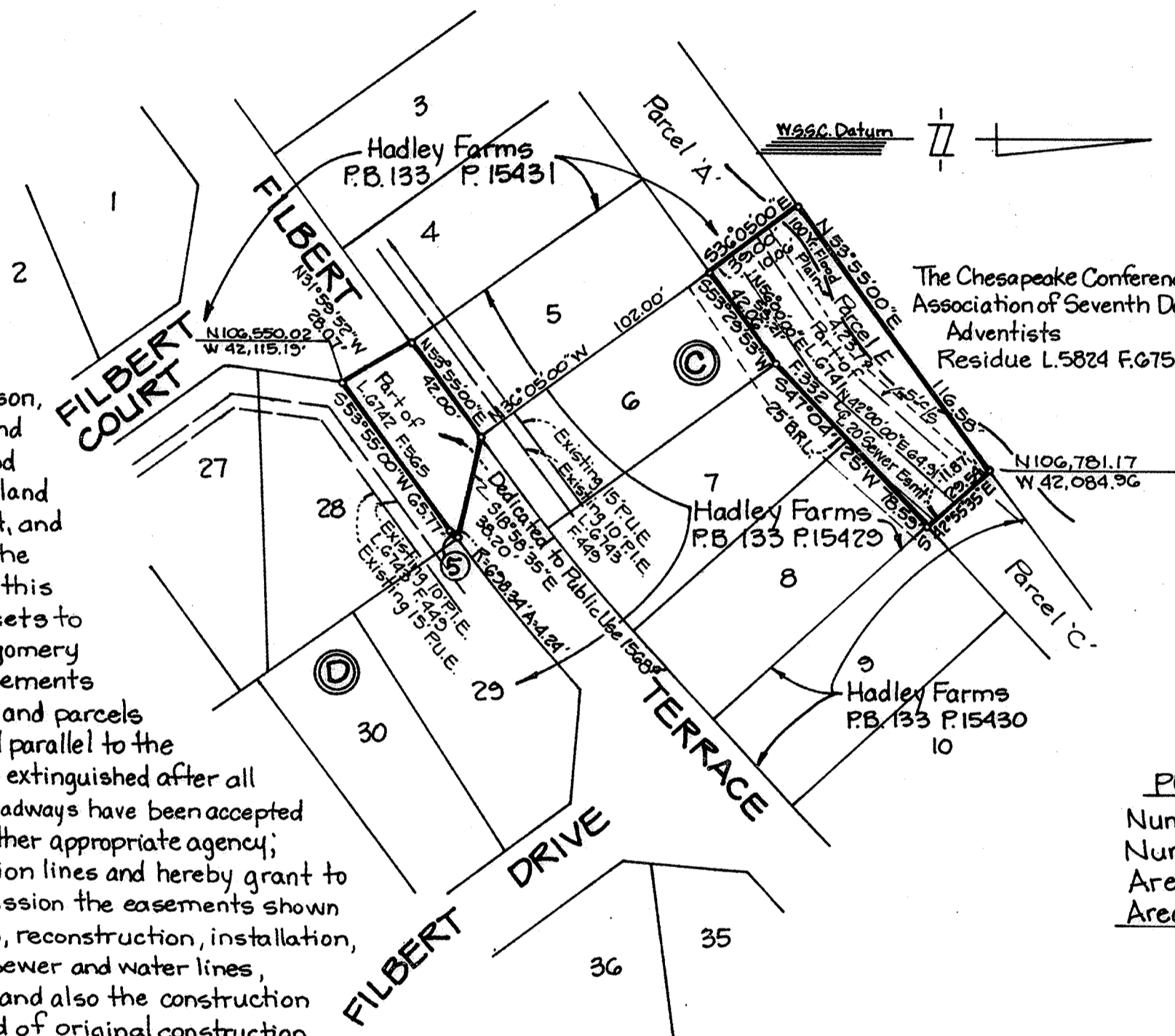
Montgomery County, Maryland

Scale: 1"=50'

April, 1986

Macris, Hendricks, & Witmer, P.A.
9220 Wightman Road, Suite 220
Gaithersburg, Maryland 20879
301-670-0840

81-137.2.1



NOTES:

1. Parcel E, Block C, is to be conveyed to the Homeowners Association.
2. Under provision of the Montgomery County Code, development of this property has been approved in accordance with Chapter 59-C-1.6, "Development Including Moderately Priced Dwelling Units" and moderately priced dwelling units are being provided in conformance with the requirements of Chapter 25-A.
3. The approval of this plat is predicated on the availability of public water and sewer prior to construction of homes.

Curve #5 data:

Rad. = 698.34'
Delta = 00°20'51"
Arc = 4.24'
Tan. = 2.12'
Chd. = S53°43'43"W - 4.24'

PLAT TABULATION

Number of Lots - 0
Number of Parcels - 1
Area of Parcel - 4237 #
Area of Street Dedication - 1,568 #
Total = 5805 # or 0.13326 ac.

RECORDED:
PLAT BOOK:
PLAT NO:

FILED
JUN 19 1986

Maryland National Capital Park and Planning Commission
Montgomery County Planning Board
APPROVED APRIL 10, 1986
Date
Norman S. Priesteller Chairman
Loremary C. Kupper Secretary-Treasurer
M.N.C.P. & P.C. RECORD FILE No. 564-46

Montgomery County, Maryland
Department of Transportation
APPROVED APRIL 29, 1986
Date
Robert C. Mengman
For Director

Montgomery County, Maryland
Health Department
APPROVED May 13, 1986
Date
Donald A. Swetler MD
Health Officer

MONTGOMERY COUNTY CIRCUIT COURT (Subdivision Plats, MO) Plat 16030, MSA, S12499, 22234, Date of Sale 1986/04/04, Printed 02/12/2017, Maryland State Archives