

**SURVEYORS CERTIFICATE**

Thereby certify that the plat shown hereon is correct; it is the subdivision of part of the land conveyed by Chesapeake Conference Association of Seventh Day Adventists to Smart, Ltd. by a deed dated Sept 16, 1985 and recorded among the Land Records of Montgomery County, Maryland in Liber 6857 at Folio 487.

9/18/85  
Date

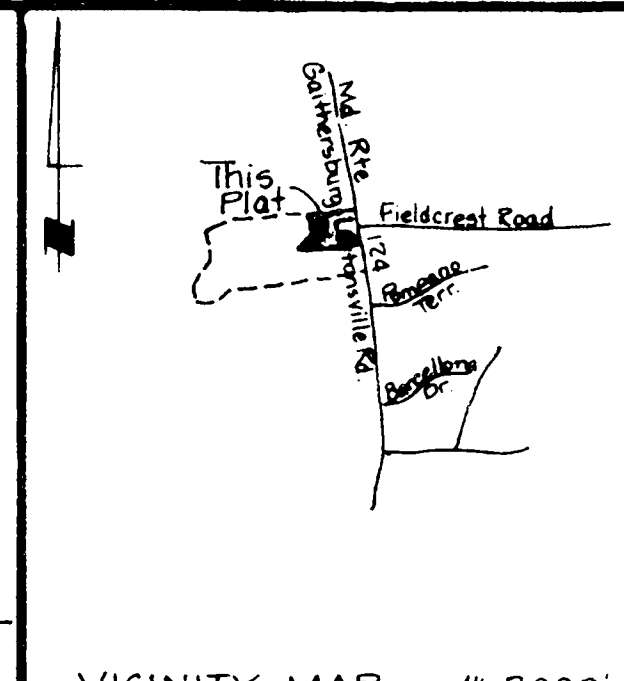
*John R. Witmer*  
John R. Witmer  
Professional Land Surveyor, MD #10668

MELLON FINANCIAL SERVICES CORP

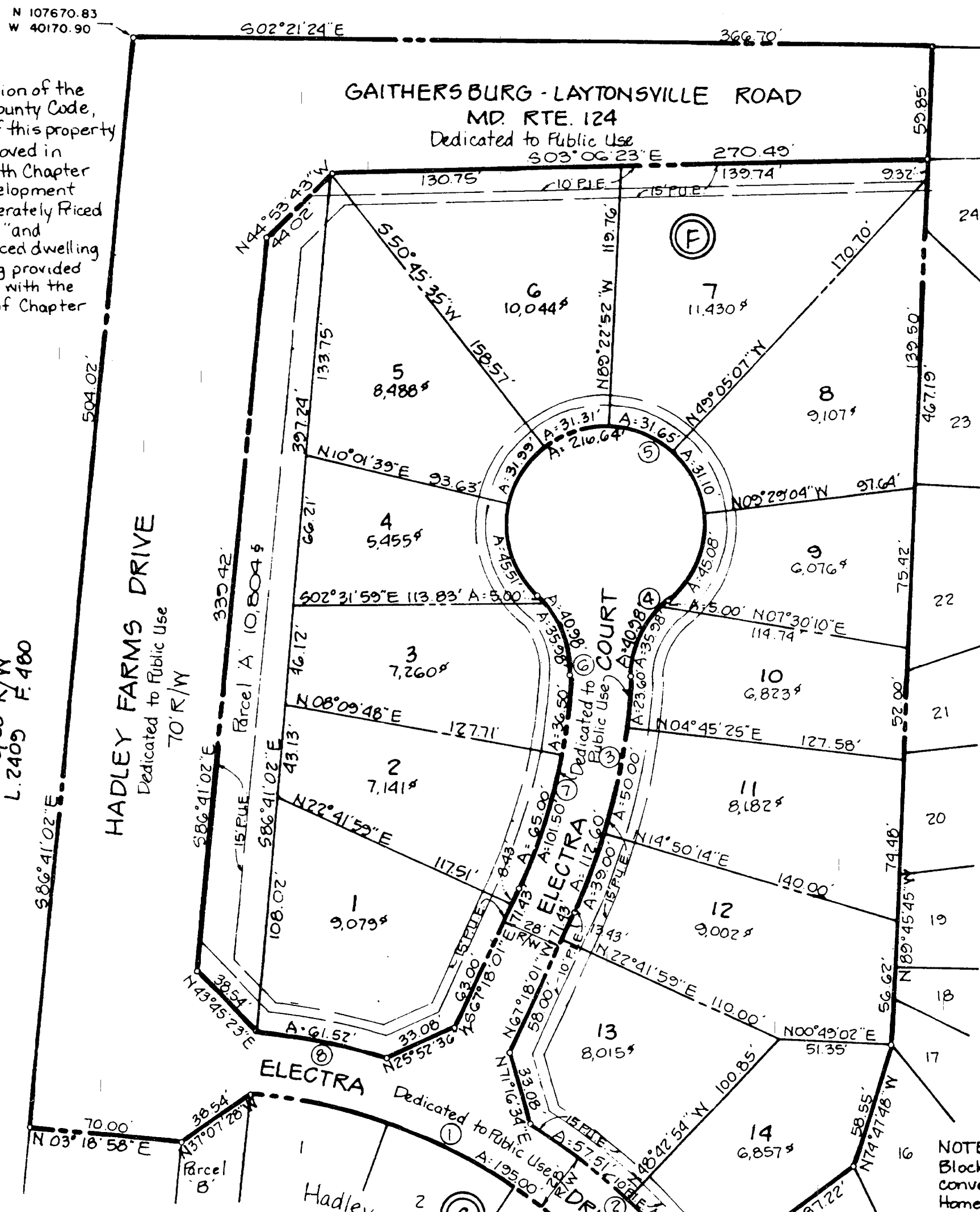
7/18/85  
Date

*Dwight M. Callantine*  
Dwight M. Callantine, Trustee

*Julia F. Gatlin*  
Julia F. Gatlin, Trustee



Under Provision of the Montgomery County Code, development of this property has been approved in accordance with Chapter 59-C-16, "Development Including Moderately Priced Dwelling Units" and moderately priced dwelling units are being provided in conformance with the requirements of Chapter 25-A.



**OWNERS DEDICATION**

We, Smart, Ltd., a Maryland corporation by John N. Smart, President and Mary P. Connelly, Secretary, owners of the property shown and described hereon, hereby adopt this plan of subdivision; establish the minimum building restriction lines; dedicate the streets to public use; establish and grant to Montgomery County, Maryland temporary easements twenty-five (25) feet wide over the lots and parcels included hereon, adjacent, contiguous, and parallel to the street lines, the easements shall be extinguished after all required public improvements in the adjacent roadways have been accepted for maintenance by Montgomery County or other appropriate public agency; grant to Montgomery County, Maryland, its successors and assigns, forever an easement in and over the land herein identified as "Ten foot wide Public Improvements Easement" (10 P.I.E.) with the terms and provisions of said grant being those set forth in that certain document entitled "Declaration of Easement" recorded among the Land Records of Montgomery County, Maryland in Liber 6857 at Folio 487 which said terms are incorporated herein by this reference; hereby grant a fifteen (15) foot Public Utilities Easement (P.U.E.) as shown to the parties named in a document entitled "Declaration of Terms and Provisions of Public Easements" recorded in Liber 3834 at Folio 457 among the Land Records of Montgomery County, Maryland, subject to all current and applicable regulations of all federal, state, and local governing agencies; grant to Montgomery County, Maryland, storm drain easements as shown hereon; and hereby grant to the Washington Suburban Sanitary Commission the ten (10) foot Public Utilities Easement (P.U.E.), and easements shown hereon for the purposes of construction, reconstruction, installation, operation, and maintenance of sanitary sewer, and water lines, appurtenances and house connections, and also the construction strips as shown, during the period of original construction.

There are no suits, actions of law, liens, leases, mortgages, trusts, or easements affecting the property included in this plan of subdivision, except a certain deed of trust and the parties in interest thereto have affixed their signatures below indicating their assent.

SMART, LTD.

4/17/85  
FILED  
OCT 8 1985

Attest: *Mary P. Connelly*  
MARY P. CONNELLY, SECY  
*John N. Smart*  
JOHN N. SMART, PRES

We hereby assent to this plan of subdivision  
CHESAPEAKE CONFERENCE ASSOCIATION  
SEVENTH DAY ADVENTISTS

8/10/85  
Date  
E. JUSTIN CARLIN (TRUSTEE)  
LOTS 1 THRU 14 AND PARCEL 'A', BLOCK 'F'  
**HADLEY FARMS**  
19<sup>TH</sup> ELECTION DISTRICT  
MONTGOMERY COUNTY, MARYLAND  
JANUARY 1985 SCALE: 1" = 50'

Macris, Hendricks, and Witmer, P.A.  
3220 Wightman Road, Suite 220  
Gaithersburg, Maryland 20878  
(301) 970-0840

For Public Water and Sewer Only

MONTGOMERY COUNTY, MARYLAND  
DEPARTMENT OF TRANSPORTATION  
APPROVED *David R. Thompson*  
Date: 02/02/85  
For Director

RECORDED  
PLAT BOOK: \_\_\_\_\_  
PLAT NO.: 285173 183006 884163 01004730 90

MARYLAND NATIONAL CAPITAL PARK AND PLANNING COMMISSION  
MONTGOMERY COUNTY PLANNING BOARD

APPROVED *Joseph A. Ansell*  
Chairman  
*John R. Witmer*  
Secretary-Treasurer  
APRIL 18, 1985

M.N.C.P. & P.C. RECORD FILE # 559-71

**PLAT TABULATION**

Area of Lots	2.5932 Ac
Area of Street	
Dedication	1.7312 Ac
Area of Parcel 'A'	0.2480 Ac
Total Area This Plat	4.5724 Ac

**CURVE DATA**

No	Radius	Area	Chord	Chord Bearing
1	260.21	199.00	42°59'16"	102.34
2	288.21	107.51	21°22'20"	54.39
3	284.20	112.60	22°41'59"	57.09
4	49.00	40.98	47°55'00"	21.77
5	49.00	216.64	275°49'39"	40.64
6	49.00	40.98	47°55'00"	21.77
7	288.20	101.50	22°41'59"	51.43
8	288.21	61.52	12°19'51"	30.88